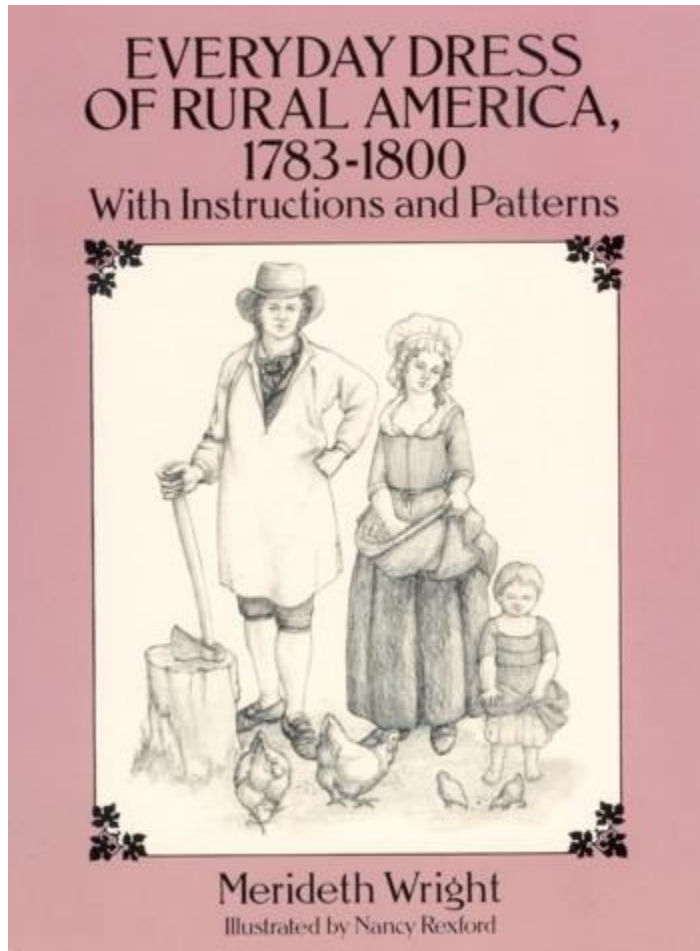


Historical Costume Patterns for DIY-Parents



Pattern Book: \$11.95 online

Working class people, like we would be.

The Lewis and Clark Expedition was from 1804-1806. That is our time period: 1804-1810.

The newer, empire-waist Regency dress was coming into fashion around this time, but would have been in Europe first, then the east coast of America, then work its way here to the Midwest.



JR Ryan Womens Basic Six-Piece Wardrobe Pattern (JR-705)



McCalls 4698 Kinsale Cape



Simplicity 5794 Capes



Townsend's Cape

Capes for winter; made of actual wool but lined in cotton or flannel.



Some Moms wear a cotton mob cap with straw hat on top



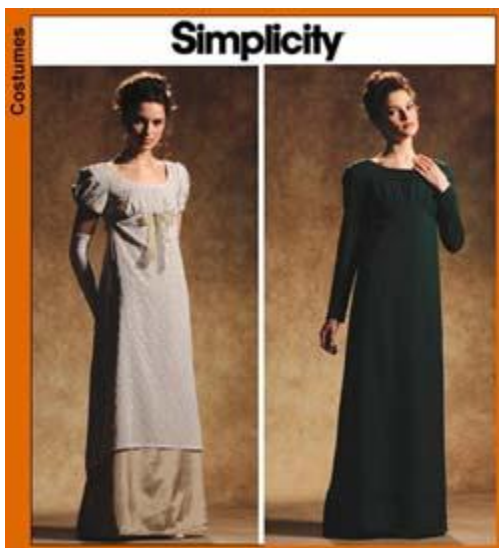
Neck Kerchief and apron from Townsends



Townsend's Shortgown



Townsend's bodice



Simplicity 4055 Regency Dress

Many people of the time were appalled by this dress—showing off a woman’s figure was unheard of until this style. They thought women were running around ‘practically naked.’



Butterick 6074: Regency dress with Spencer Jacket

8162

Simplicity™



Designed and printed in the USA
Diseñado e impreso en los Estados Unidos
Créé et imprimé aux États-Unis



Simplicity 8162: 18th Century Undergarments



Butterick



Butterick 6573 Mens Tailcoat

And the men would have typically dressed like this (above) if we wear the 'modern' Regency empire waist dress. But ours typically don't—most Dads dress like below. . .



The 'hunter' look, with a knit Voyageur cap, or a felt hat blank, shown below:





The more 'colonial' man look—some of our Dads wear an outfit like this one (above).



Some Dads wear a work shirt (above), with a felt hat blank.